



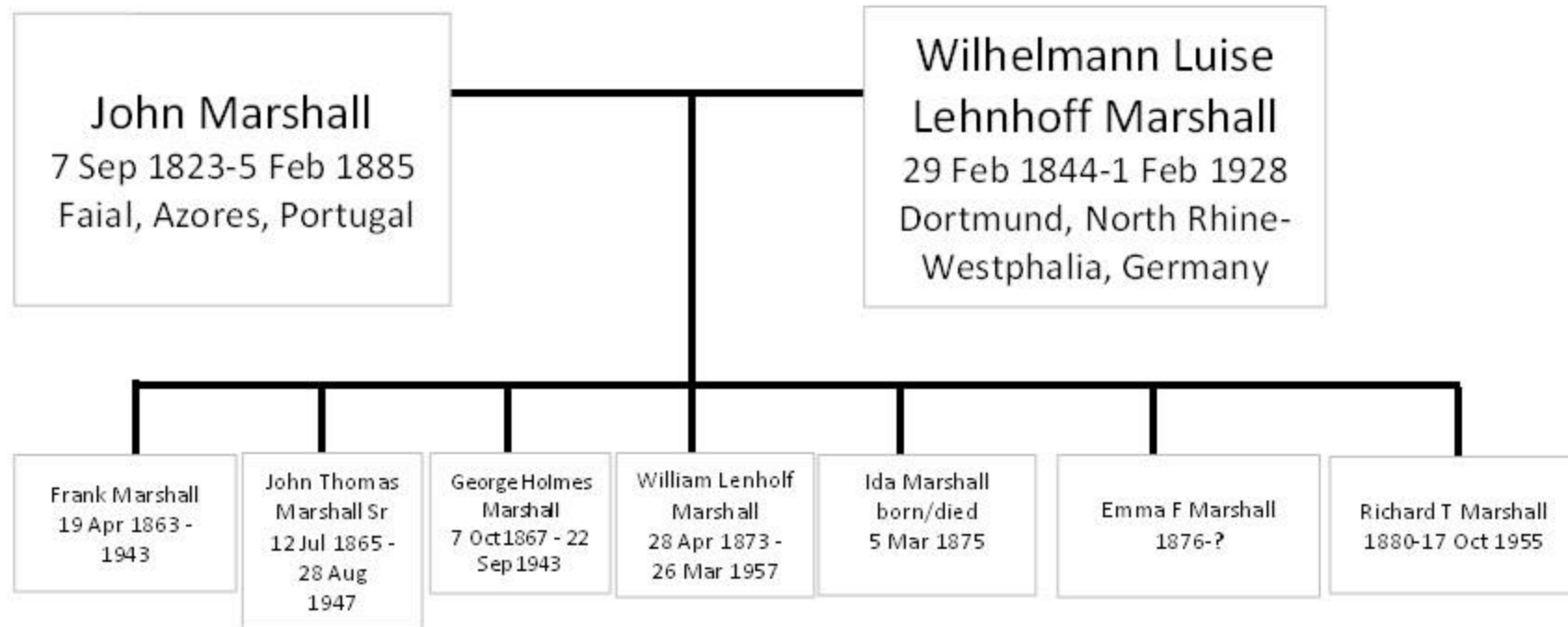
# THE MARSHALL BROTHERS

## ARCHITECTS, BOATWRIGHTS AND PILLARS OF THE COMMUNITY

Donia Bulloch Smith, George Watkins and Ken Tucker,  
Descendants

Apalachicola FL 2023

## MARSHALL FAMILY



# JOHN MARSHALL

- Quaker/Portuguese Sailor
- Son of Francisco and Maria Marshall (or Machado)
- Birth 7 Sep 1823 \* Faial Azores, Portugal
- Death 5 Feb 1885 \* Baltimore, MD USA
- Named after British Sea Captain upon whose ship John served as Cabin Boy



# JOHN MARSHALL

## LIFE EVENTS

- Portuguese customs at that time dictated that the first son received family property, the second son was destined for the military, and the third son was dedicated to the priesthood. Having no desire to be a priest, John Marshall left home at age 10 with his oldest brother and shipped out as Cabin Boy on a whaling vessel.
- 1838 – John entered the US through the Port of Delaware at age 18.
- 1853 –Applied for US Citizenship in Philadelphia and later married first wife, who died there.
- 8 July 1853 – Joined US Navy, serving under Commodore Perry when Perry sailed into Yeddo Bay, Japan (see letter of 28 Apr 1943). Served with Perry in Africa where they encountered cannibals.
- 16 June 1862 – married Wilhelmina (Minnie) Lehnhoff, residing in Baltimore and raising 5 sons and 2 daughters.
- 1880 – Love of the sea spanning 30 years (schooner captain, oysterman). Also worked in canning factory, Yale lock company, and church janitor.
- Died 5 February 1885 of malaria and capillary bronchitis. Buried in Mount Olivet Cemetery, Baltimore.
- Post-mortem - Provident Bank formed based on John Marshall's keeping of oystermen's funds.
- Blockade Runner, smuggling supplies past the Union Blockade in Savannah GA



## MINNIE LEHNHOFF MARSHALL

- Birth 29 Feb 1844 \* Dortmund, North Rhine-Westphalia, Germany
- Death 1 Feb 1928 \* Lake City, FL
- Daughter of William and Wilhelmina Lehnhoff
- Moved to America with Aunt and Uncle



## MINNIE LEHNHOFF MARSHALL

- After John Marshall's death, Minnie remarried twice, first to Captain Ballard who shipped opium for medicinal purposes from the Orient in the ship pictured below. He was lost at sea.
- Minnie's third marriage was to J.S. Funk, whom she referred to as "Dearie". They lived in Lake City FL for 42 years, where they owned a city block on which they built a small church for the poor.



Captain Ballard's Ship

## HOW THE MARSHALL BROTHERS ARRIVED IN APALACHICOLA (as written by Dwight Marshall)

- John and George Marshall came to Florida and acquired a photography business and a small mule-powered merry-go-round with which they toured from Jacksonville to Pensacola, selling rides and photos.
- They later traded the merry-go-round for a schooner and hauled freight to Carrabelle, Tampa and Key West. On the return trips, they hauled buttonwood with which buttons were made in a factory in Apalachicola.
- John then moved to Apalachicola, working for a contractor. George worked for the railroad for a while, then moved to Apalachicola and started his contracting work. Later, in the 1890s, Will, Frank and Richard came to Apalachicola.
- It was then the brothers began building predominantly Queen Anne Style and Craftsman Style Bungalow homes and boats.



# FRANK MARSHALL (First Born)

- Birth 1863 \* Baltimore, MD
- Death 1943 \* At Sea
- Frank's Last Letter to Home:

Alice Town Bimini  
April 28 - 43

Dear Frank & Kathryn  
Your letter of  
April 7 Recd morning of 27  
Just 20 days coming from  
St Augustine laid in  
Kassau 14 days long  
enough to go round the  
world Mail need here  
2 to 4 weeks after written  
so you will get this some  
time in next 4 weeks  
some Mail service well  
we are all well but sure  
Hungry for a good square  
Meal all we get here is  
Fish & Rice & Rice &  
Fish Potatoes 15¢ lb  
Cabbage 6 Cents 16¢ Milk  
20 Sugar 9 Cents 75¢ Butter  
80 Salt Beef 40 Pork same  
so you are lucky  
Dinner shoes 14 & 16 shill.  
Shoes like we get for 3.50  
to 4.50 now 7.00 to 9.00

2

Cloths double price well  
the weather is getting  
warm that is one good  
thing when I was a kid  
the boys called Fleamole  
Patch so guess I will  
soon be Daddy Patch  
so save your old ones  
for me.  
With your Birth Day gift  
sure come in good many  
thanks. Now for some of  
the Family History your  
Grand Father John Marshall  
was Born 1822 Captain of  
Payal Azore Islands now  
away from home with oldest  
Brother at ten years old  
shipped as Cabin Boy on  
whaling ship followed  
till 21 came to Maine &  
Chief Justice John Marshall  
stated for him to become  
U.S. Citizen joined U.S. Navy  
& Chief Justice gave him  
his Name of John Marshall

3

was with Commodore  
Matthew Calbraith Perry  
when Perry sailed into  
Yokohama Bay July 8 - 1853  
see Readers Digest May 42  
after leaving Japan went  
to Coast of Africa landed  
some place to get fresh  
water. He described Perry  
as a big Man of about 200 lbs  
they went ashore armed &  
was Met. By Cannibals  
the Chief was a big Man  
nearly 7 feet with arms  
like water Mollusks after  
some talk the Chief of  
natives grabbed Perry  
& started to walk like  
Perry was a Baby they  
had to cut him to pieces  
as could not use guns &  
kill half of Party of Natives  
before leaving Africa  
they got big War canoe  
that had a 100 Prowers  
was going to bring to

P.S. Am Proud of My  
Family & to be an American  
Washington it was Made  
From one Piece on  
way Home ran into a  
Hurricane & Booby loose on  
Deck & they had to  
turn it loose to save  
the ship would like  
for you to see if you  
can get the Life of  
Perry as there lots of  
other things he used to  
talk of. Just think your  
Brother Walter is in Africa  
your Cousin Herbert is to  
you are in Coast Guards  
& so was in Panama so  
you need never be ashamed  
of being a Marshall. I  
was in Spanish War  
Naval Reserve Boson Mate.  
Your Grand Father was  
Boson Mate & Captain of Pop  
well son do not think  
that we will ever see each  
other again as am now going  
on 4 score & 1 but if not  
Remember & you & Kathryn

## JOHN THOMAS MARSHALL, Sr (married Maude Smith)

- Children: Dwight, John Marshall Jr, Will, George and Joe
- Architect and Builder
- Birth 1865 \* Baltimore MD
- Death 1947 \* Apalachicola FL



John Thomas Marshall, Sr.



16<sup>th</sup> Street John Marshall House (burned 2010)



Maude Smith



## JOHN MARSHALL BUSINESS ACTIVITIES





## The John Marshall House on St George Island



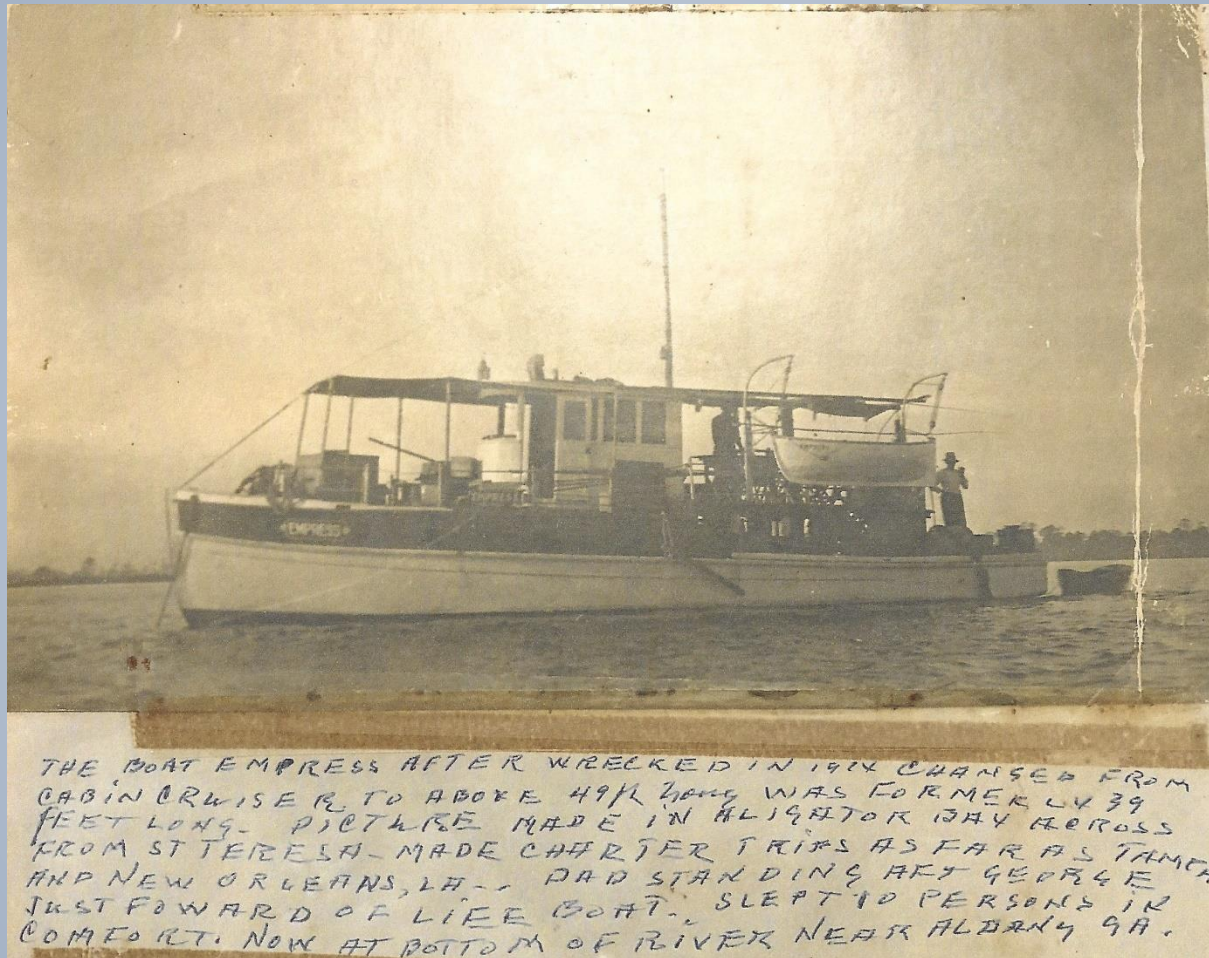
Early 1900's - First House on St George Island (1965 Photograph) at 9<sup>th</sup> and Pine



Suspected John Marshall Dock Pilings – Marks St SGI



## JOHN MARSHALL'S "EMPRESS"



The Empress was 49 feet in length, slept 10 and made charter trips as far as Tampa and New Orleans. She took visitors for day and weekend trips to St. George Island. John Marshall commuted in the Empress to his beach house on St. George Island during the summers. George Marshall on the left, John Marshall on the right, with pipe.



## MARSHALL BOATS



Dwight Marshall Sr and his boat, 1970



Dwight Marshall, Sr's Buccaneer. The Buccaneer was used for recreation in the bay and river.



# MARSHALL FAMILY BOATS

The names of boats we had

Porter sail boat Uncle Will & Dad  
 Grace sail boat Uncle Will & Dad  
 Sharpie sail boat Dad  
 D. F. Marshall sail boat Dad

Little Nomad	motor boat	Dad
Big Nomad	motor boat	Dad
Nancy Lee	sailboat	mine
Song Segs	motor boat	mine
Folly	motor boat	2 s. wifings & mine
Sily Goodie	motor boat	Montgomery 2 s. Ham. 2 s. Marshall D.F.
capt. Joe	motor boat	Dad
no name	motor boat	John & I
Empress	motor boat	Dad
Buccanier	motor boat	mine



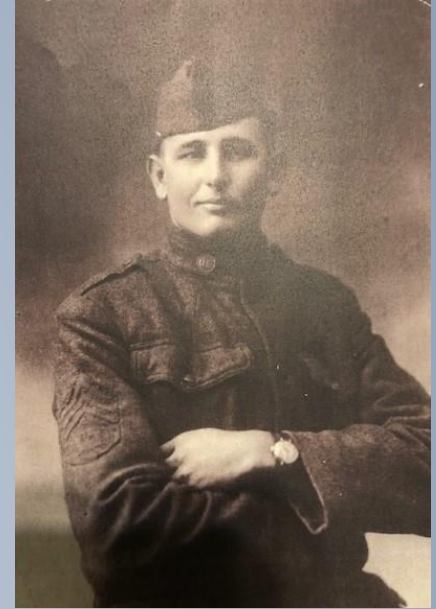
## APALACHICOLA CITY HALL



Apalachicola City Hall, Water Street, Originally Built by John Marshall per Apalachicola Times Article 9 May 1903

## JOHN MARSHALL DESCENDANTS, APALACHICOLA

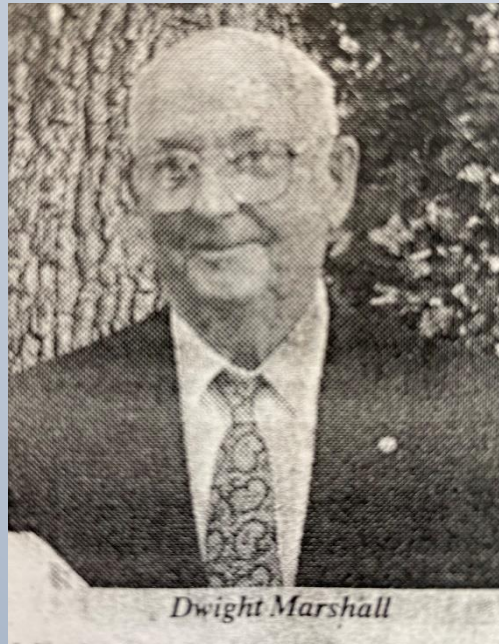
- Son, John Marshall, Jr. - 12 Oct 1895 – 29 Jan 1929
  - Sergeant, Army Engineers, 1917 – 1919, WW I.
  - Captain and Commander, Company E, Corps of Engineers, 1928-29, Fort Coombs.
  - City Engineer, City of Apalachicola, 1925-29.
  - Died on duty as City Engineer in aftermath of a storm event.
- Son, Dwight Marshall, Sr. - 16 Apr 1891 – 23 Apr 1973
  - County Commissioner, School Board Member, City Commissioner, and Officer or Member of various local organizations including Master Mason and active over 50 years in the Masonic Lodge.
  - Woodwork, building supplies, hardware store
  - Co-founder and longtime officer and Director of Citizens Federal Savings Bank of Port Saint Joe, which through various mergers, acquisitions, and reorganizations is now part of Cadence Bank, N.A., Birmingham AL.





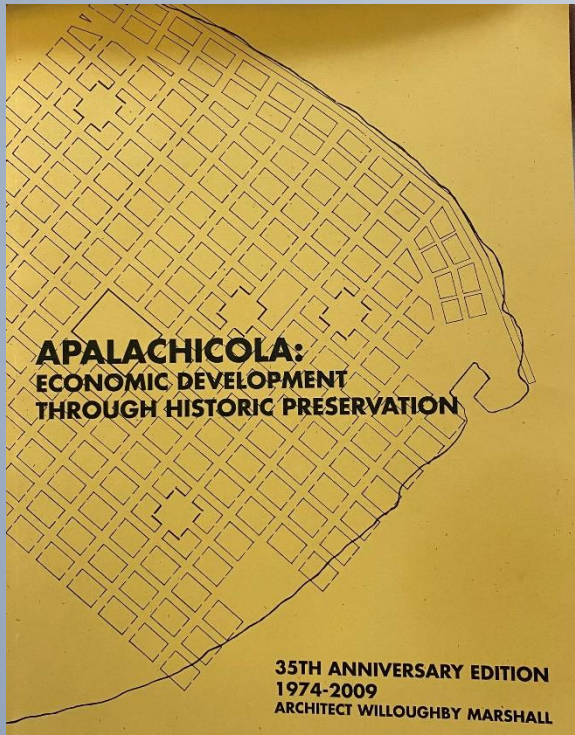
## JOHN MARSHALL DESCENDANTS, APALACHICOLA (continued)

- Grandson – Dwight Marshall, Jr. – Nov 1926 – Jan 2004
  - Army, 1944-46
  - Mayor, City of Apalachicola, 1957-58.
  - County Commissioner, 1958-62.
  - Early 1980s co-founder of Anchor Realty, St George Island, which still operates on the Island.



## JOHN MARSHALL DESCENDANTS, APALACHICOLA (continued)

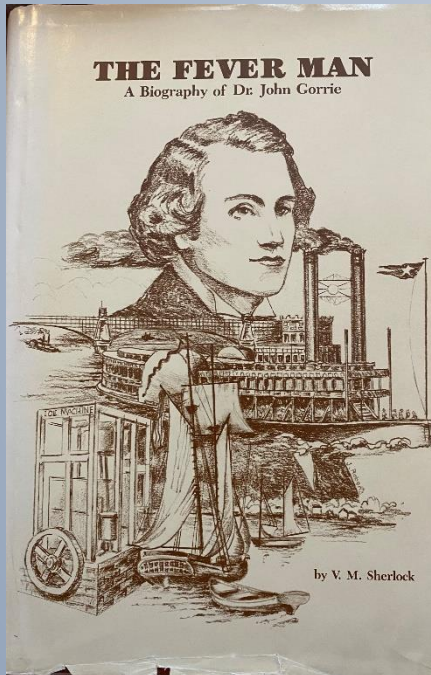
- Grandson – Willoughby M. Marshall - 16 Sep 1923 – 19 June 2020
  - Sergeant, Army 1942-45, stationed in Hawaii
  - Returned to Apalachicola after career as an architect in the Boston area
  - Developed studies that produced restoration and preservation plans for historic structures in Apalachicola
  - Plans sparked preservation/restoration of historic homes and businesses in Apalachicola that continues today





## JOHN MARSHALL DESCENDANTS, APALACHICOLA (continued)

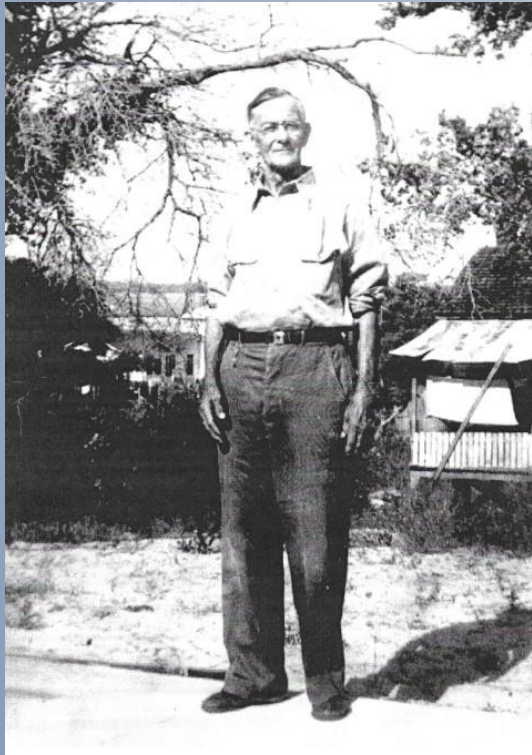
- Granddaughter – Vivian Marshall Sherlock – 26 Jun 1915 – 8 Jul 2017
  - Author of biography of John Gorrie, inventor of artificial ice machine and resident of Apalachicola.





## GEORGE HOLMES MARSHALL (Married to Mary Eliza Neuman)

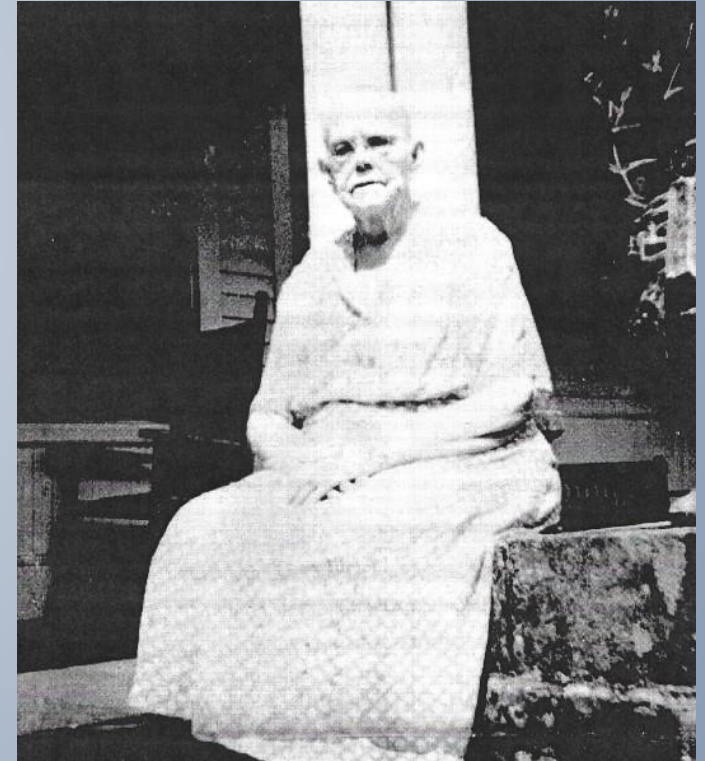
- Children: Bessie, Herbert, Rudolph, Neuman
- Architect and Builder of Homes and Boats
- Birth 1865 \* Baltimore MD
- Death 1947 \* Apalachicola FL



George H Marshall



George H Marshall Home



Mary Eliza Neuman

## GEORGE MARSHALL DESCENDANTS

- Son, Rudolph Earl Marshall
  - Sep 1891 - Sep 1971
  - Pensacola Commercial Boat Builder who co-built most boats of the Marshall Brothers/Cousins in Apalachicola
  - Also built submarine chasers for the US Navy in Texas during WW II



169 Ave B, Apalachicola



Grocery/Candy Store Replica



GEORGE MARSHALL DESCENDANTS:  
Rudolph Earl Marshall



Rudolph Marshall



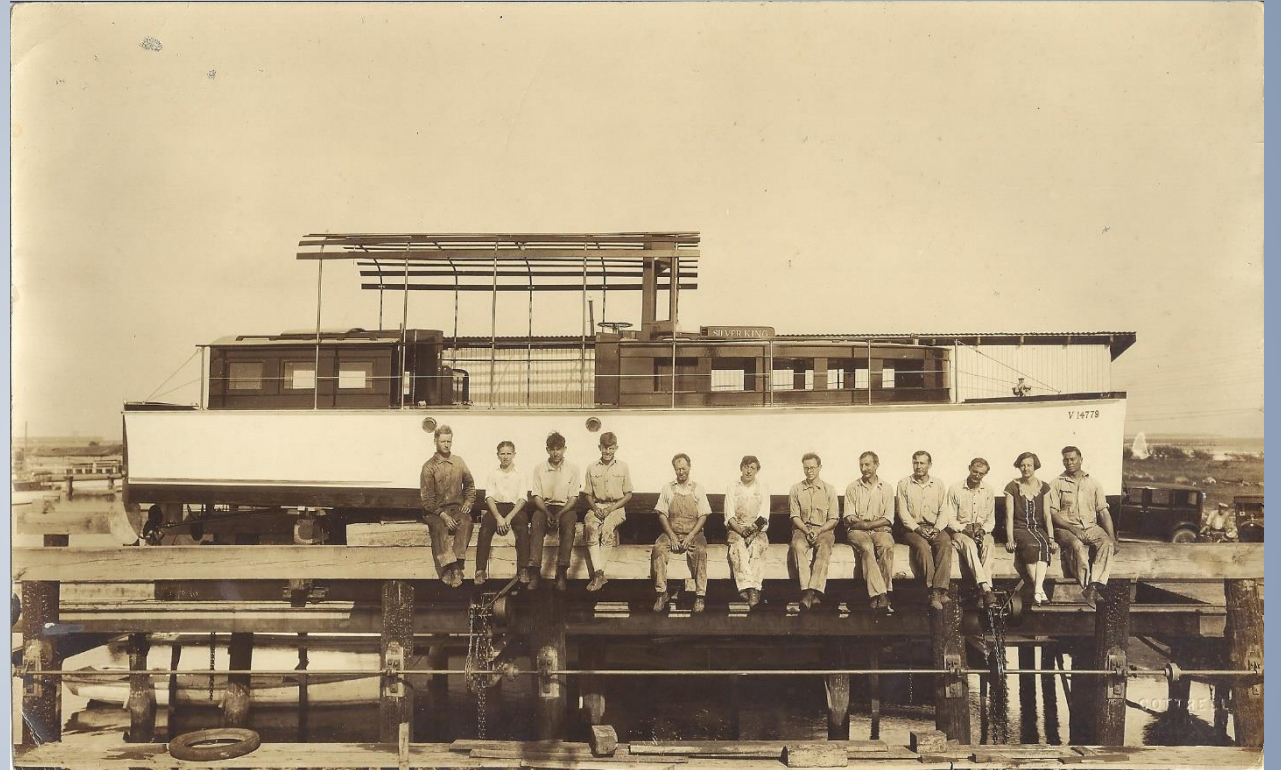
Rudolph Marshall and Workers



# GEORGE MARSHALL DESCENDANTS (continued): Boats Built by Rudolph Earl Marshall



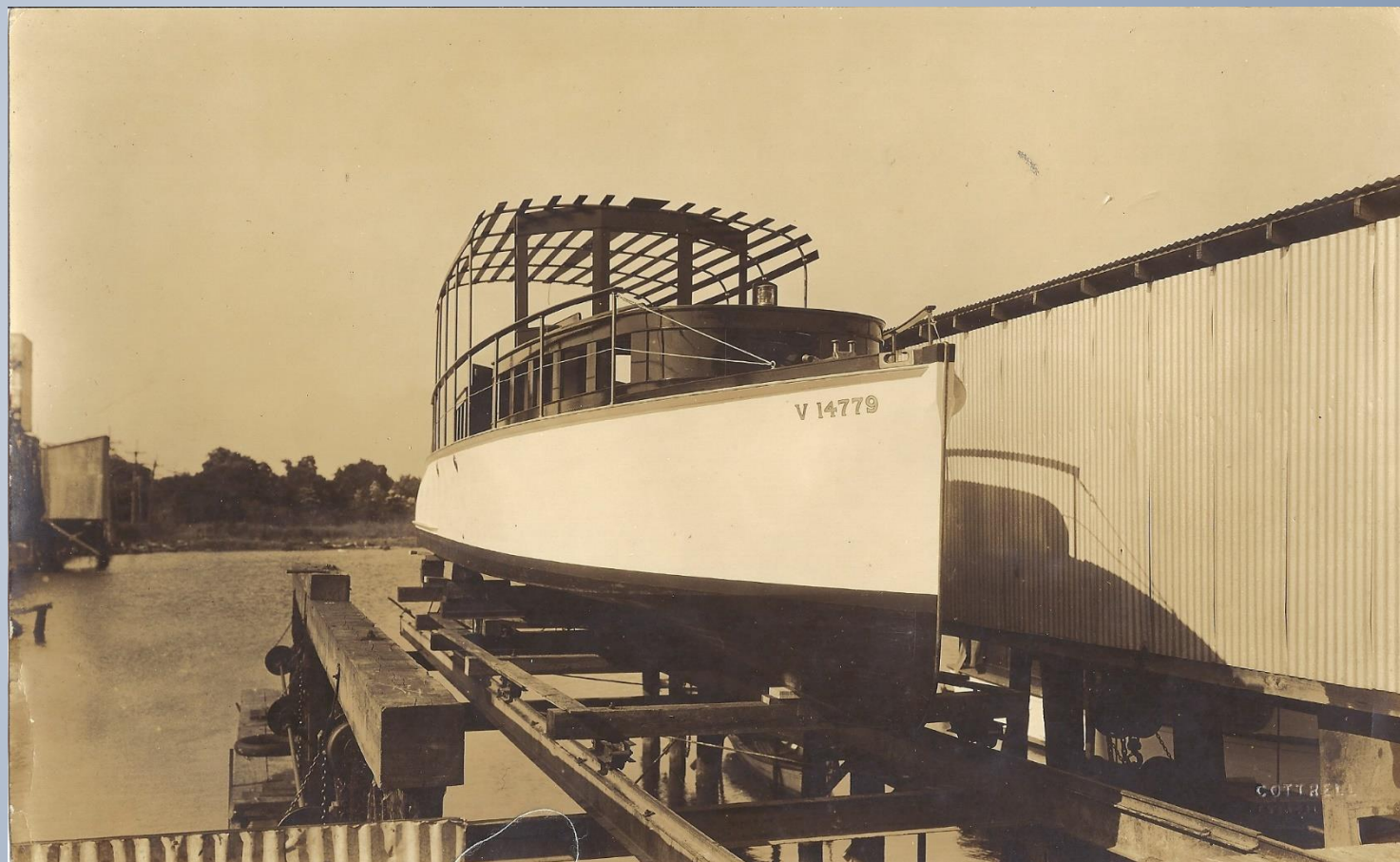
Marshall Boat Works, Barrancas Ave, Pensacola



On the Ways

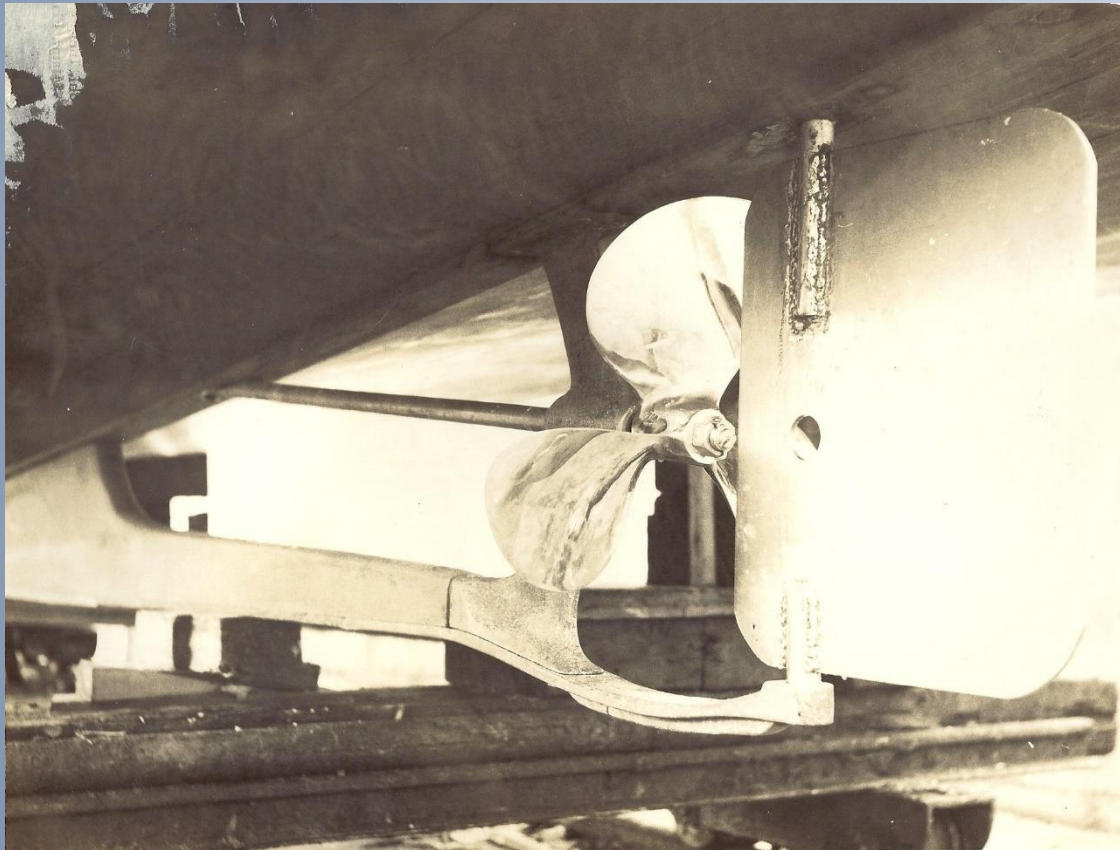


GEORGE MARSHALL DESCENDANTS (continued):  
Boats Built by Rudolph Earl Marshall





GEORGE MARSHALL DESCENDANTS (continued):  
Boats Built by Rudolph Earl Marshall





# GEORGE MARSHALL DESCENDANTS (continued): Boats Built by Rudolph Earl Marshall

## HE MADE HIS CHILDISH DREAM COME TRUE

Note: This is one of a series of articles The News will publish about Pensacola industries. To read them will be to know more about the inside sidelights of the firms that employ Pensacola's people.

By HENRY S. WRENN

A dream of boyhood and an ambition of young manhood is coming true for R. G. Marshall, Pensacola builder of speed boats.

When Marshall was a boy in Apalachicola, he used to sit on the beach and watch the slow-moving boats in the bay as the waters rolled over his bare feet. He dreamed of speed craft, of 50 miles, 60 miles, even 70 miles an hour in a trim little boat. His dream later touched on large and powerful service craft that would be up with the best of boats from the standpoint of speed.

**His Daily Dozen**  
Boats became Marshall's "daily dozen" as he grew into young manhood, and he began to build them. First there were row boats, then he built canoes, and finally he began to turn out motor boats. These were of all types. He still is building boats, but his plant is in Pensacola now instead of Apalachicola.

If you want a tiny boat to sail in your bathtub on a rainy day, or if you want a 40-foot cabin cruiser to take you places where you can do things and meet people, the

Marshall Boat Works can build it for you. The Marshall plant is located on the shore of Little Bayou at Barrancas avenue.

### Builds Navy Boats

Marshall now is engaged in building the first of three seaplane rescue boats for the United States Navy. These boats will be 36 feet long, and nine feet wide. The three will cost about \$20,000. They will be powered by 400 h.p. Liberty Capitol motors, and will attain a speed of 45 miles an hour. The local man was given contract for the three boats in competitive bidding against Mobile, New Orleans, Hampton Roads, Jacksonville and other boat building firms. The first boat will be finished in about three weeks, and will be given an official trial as engineers and high officers of the Pensacola Naval Air station look on.

Marshall, the dreamer, the builder, who started with small boats and then built big ones, will be at the wheel as the race horse of the deep plows its course through Pensacola bay. It will be an official test, and the boat must make 45 miles an hour to pass the navy requirements.

### "She'll Make It"

"She'll do it easily," Marshall tells the visitor to his shop as he stands beside the big racer.

The Marshall Boat Works has built some of the speediest racers ever seen in Gulf coast waters.

Marshall has to his credit the famous San Carlos, property of W. B. Harbeson, which cleaned up the races at New Orleans a few years ago with a speed of 70 miles an hour. He built the Lady Harbeson which won its races at New Orleans with a speed of 55 miles an hour. This boat never has been beaten in its class.

"The Sammy," owned by Thomas Watson, and other boats that ply the waters of Bayou Texar and other Pensacola bays and bayous, carry the Marshall stamp.

### Building Secrets

"Every plank must be sloped and fastened just so to get the maximum speed out of a boat," Marshall declared. "The seven men I have working with me are master craftsmen and together we see that every boat is built to attain that extra mile of speed that will carry it across the finish line a winner."

White cedar and mahogany are the materials used in building boats. There are no nails in a Marshall boat. Copper fastenings and marine glue are used. With the exception of steering gear, all material is bought through Pensacola firms, Marshall said.

Marshall has built boats for resi-

dents of several states. His craft now are scattered from Michigan to the lower tip of Florida.

### Fascination In It

"There's a great fascination in building boats," Marshall declared. "You take a personal pride in every boat, and you want to see that it is the best in its class. While we are building for speed, we are building also for beauty and endurance."

Marshall came to Pensacola three years ago from Apalachicola. His plant was wrecked by the hurricane of September, 1926, but he resumed his boat building just as soon as he finished rebuilding the plant.

## Getting Up Nights

If Bladder Weakness, Getting Up Nights, Backache, Burning or Itching Sensation, leg or groin pain, make you feel old, tired, peppy and worn out why not make the Cystex 48 Hour Test? Don't give up. Get Cystex today at any drug store. Put it to a 48-hour test. Money back if you don't soon feel like new, full of pep, sleep well with pains alleviated. Try Cystex today. Only 60c.—Adv.

## TWO CHILDREN DIE TOGETHER

Young Fishermen Drowned  
While On Jaunt

## MOTHER!

Child's Best Laxative is  
"California Fig Syrup"

## Knowles Bros. Agency

Established 1866

INSURANCE OF ALL KINDS

Agents Equitable Life

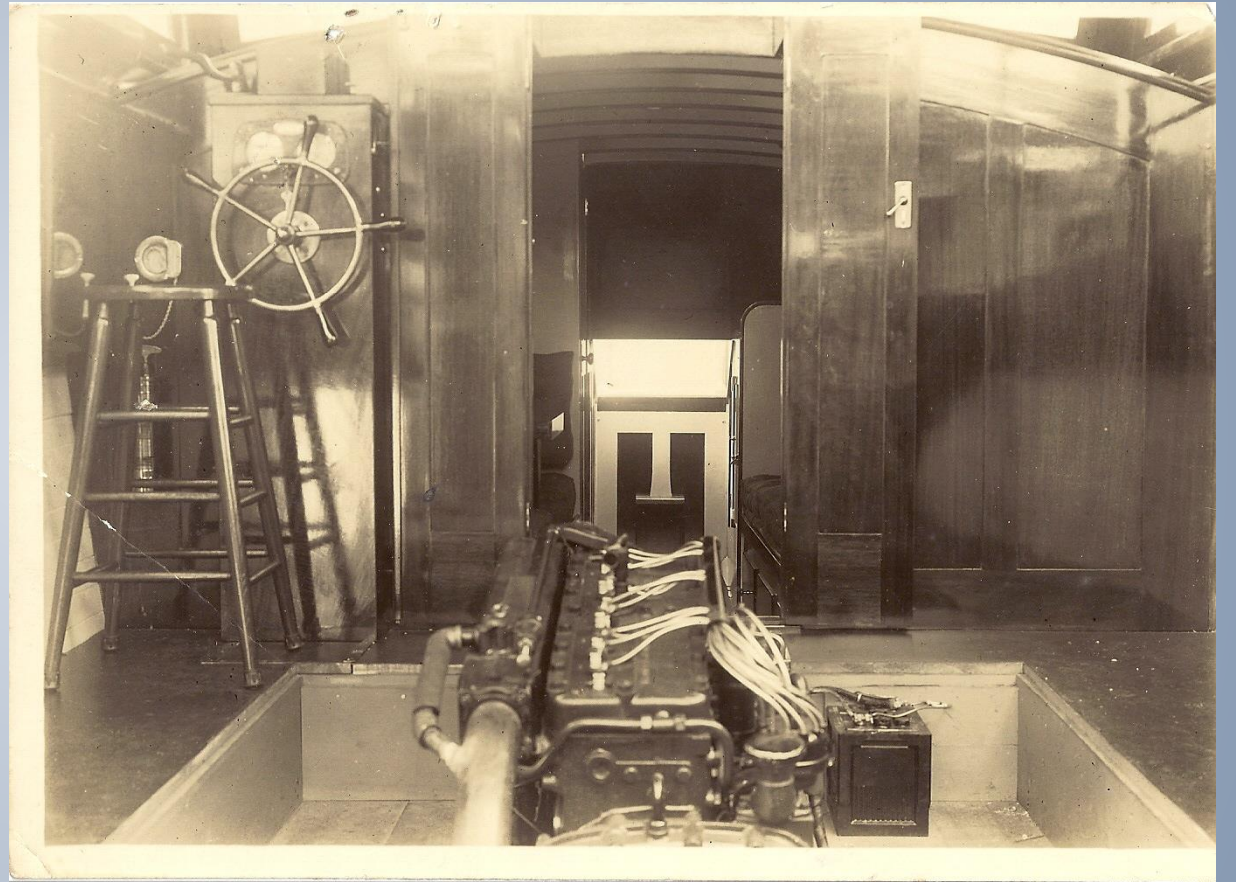
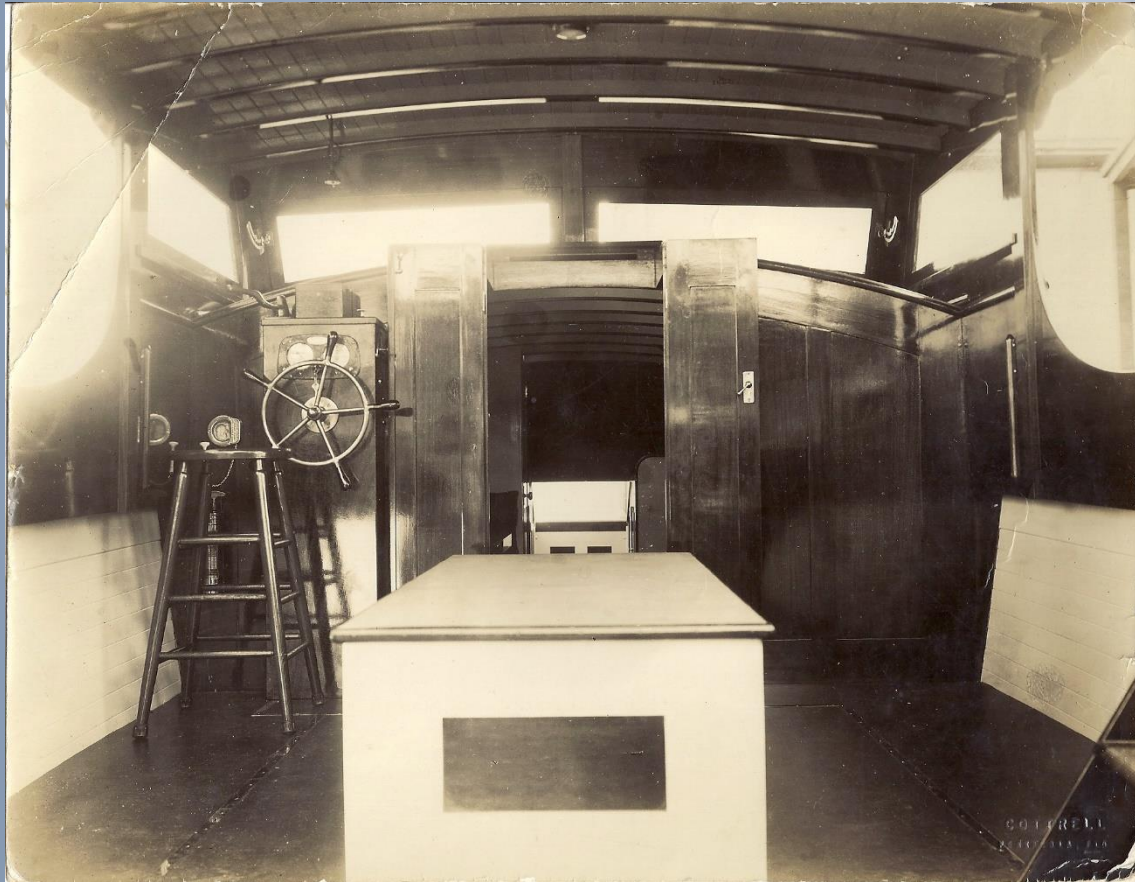


GEORGE MARSHALL DESCENDANTS (continued):  
Boats Built by Rudolph Earl Marshall





GEORGE MARSHALL DESCENDANTS (continued):  
Boats Built by Rudolph Earl Marshall





## GEORGE MARSHALL DESCENDANTS (Continued)

- Son, Neuman Marshall
  - Birth 19 Nov 1906 Apalachicola – Death 16 Jan 1998 Apalachicola
  - Army Sergeant, late 1930s and early 1940s, US Army Corps of Engineers, Fort Coombs
  - Monument, concrete, and other construction throughout the County
  - Fire Chief, City of Apalachicola 50+ years. Fireman for 75 years with fire station, now named Neuman Marshall Fire Station.



First Fire Engine Bell from a  
LaFrance Fire Truck



Neuman Marshall



17 14<sup>th</sup> Street, Apalachicola

## GEORGE MARSHALL DESCENDANTS (Continued)

- Son, Herbert O. Marshall
  - Birth 18 Jan 1901 Apalachicola – Death 12 Sep 1976 Apalachicola
  - US Navy during WW I
  - Army Captain 1939, Commander of Company E
  - US Army Corps of Engineers, Fort Coombs
  - US Army Corps of Engineers, Major, WW II
  - Sheriff, Franklin County, 1952 – 1968
  - Owner, Little St George Island with wife Pearl Porter Marshall, where he built a home in 1940s
  - State of Florida purchased the Island in 1977 under the Environmentally Endangered Program



139 Ave B, Apalachicola, built by  
Herbert Marshall 1927



# APALACHICOLA DESCENDANT of GEORGE MARSHALL

## George Marshall Watkins

- Birth 2 Feb 1958 - Lived entire life in Apalachicola
- Father Richard C Watkins
- Mother Mary Joyce Marshall
- Married to Carla Faircloth Watkins
- Children Amber Watkins, Kara Watkins McCluskey, Husband Robert Brian
- Two Grandchildren, Brysun, age 11, and Breelin, age 5
- Attended Apalachicola Schools, Graduated 1976
- Shrimper, Net Fisherman, Crabber, Flounder Man, and did some Oystering
- Worked in concrete with Grandfather Neuman Marshall
- Built 21 boats for hunting and fishing
- Beekeeper for the last 30 years
- Employed by State of Florida, ANERR, for the last 25 years





## MARSHALL HOUSE FIELD STATION



Front View



Rear View



Barn



## HOMES AND BUSINESSES BUILT BY GEORGE MARSHALL



15 13<sup>th</sup> Street, Margaret Key House,  
built by John and George in 1895



Trinity Episcopal Church Rectory, 79  
6<sup>th</sup> Street, built by George in 1905



The Buck/Hayes House, 45 Ave D,  
built by George



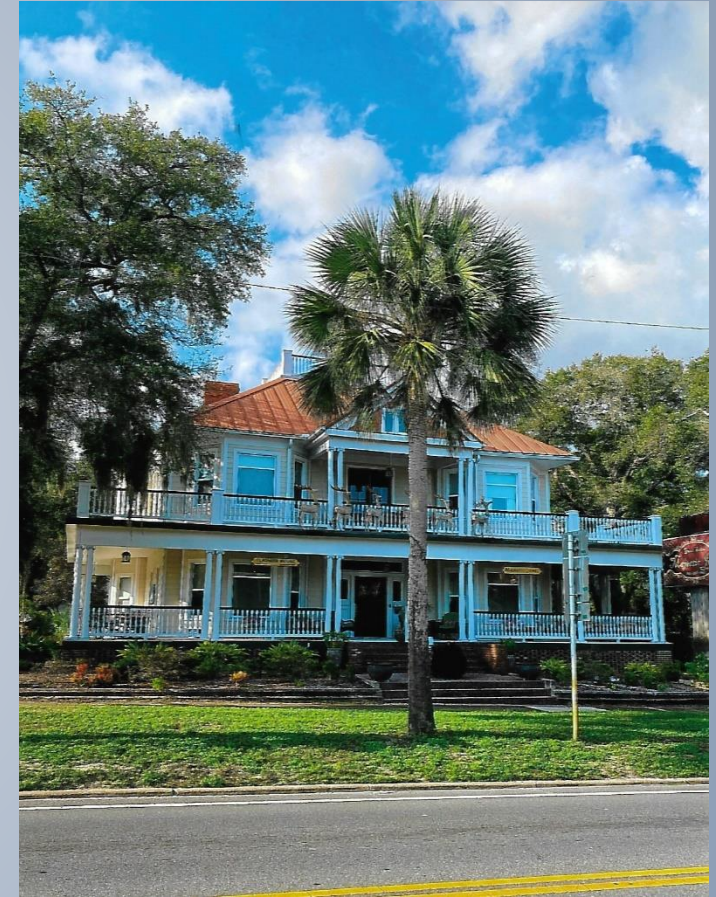
## HOMES AND BUSINESSES BUILT BY GEORGE MARSHALL



The James N. Coombs House,  
80 6<sup>th</sup> Street, built by George  
in 1905



76 6<sup>th</sup> Street, built by  
George



The Flatauer House, 73 Ave E,  
built by George in 1908



## HOMES AND BUSINESSES BUILT BY GEORGE MARSHALL



Postmaster Farley House, 27 15<sup>th</sup> Street, built by George in 1886 (signature in attic on rafter)



The Sam Teague House, 19 9<sup>th</sup> Street. Built by George



Taranto House, 4<sup>th</sup> Street, built by George in early 1900s



## HOMES AND BUSINESSES BUILT BY GEORGE MARSHALL



Hickey House, Hwy 98 and 25<sup>th</sup> Street, built by George in 1927



Dr. Weems House, 11 9<sup>th</sup> Street, built by George in 1910



Wefing House, 148 Ave C, built by George in 1909



## HOMES AND BUSINESSES BUILT BY GEORGE MARSHALL



The H.D. Marks House, 195 Ave E and 16<sup>th</sup> Street, built  
by George and John Marshall



## HOMES AND BUSINESSES BUILT BY GEORGE MARSHALL



Wakefield House, 67 Ave C, built by Marshall Brothers in 1906



Marshall/Porter House, 160 Ave C, 1800s house rebuilt by George after fire



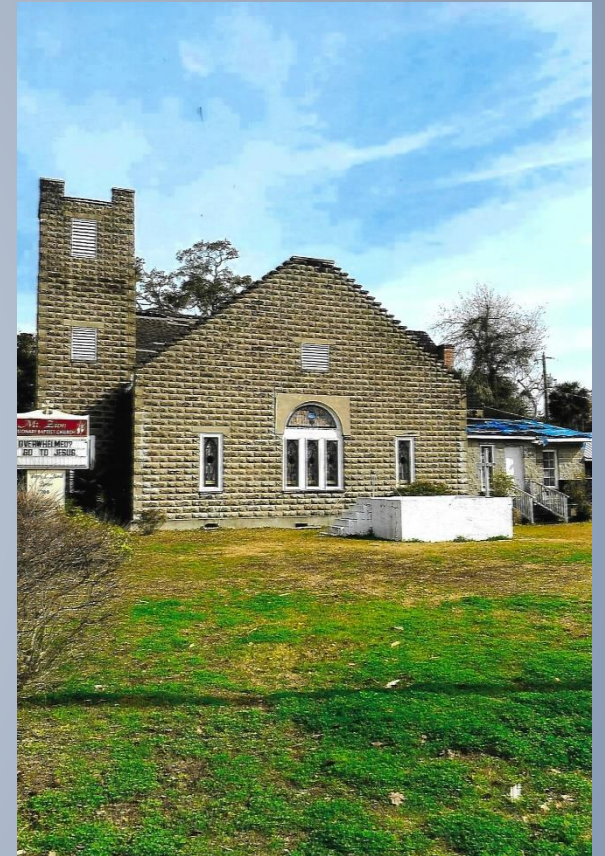
## HOMES AND BUSINESSES BUILT BY GEORGE MARSHALL



St Paul AME Church, 81 Ave I.  
Built by African-American  
Ezekiel Walton and George  
Marshall in 1921.



First United Methodist Church, 75 5th Street,  
built by George in 1901



Mount Zion Baptist Church,  
98 Ave E, built by George in  
1917. Cast concrete block  
with rusticated finish.



## HOMES AND BUSINESSES BUILT BY MARSHALL DECENDANTS



Billy Buzzett Home, Bay Ave and 12<sup>th</sup> Street, built by Neuman Marshall, 1939



Weems/Cummings House, 109 Bay Ave



140 Ave C, built using wood that survived the fire at Herbert Marshall's home next door



## HOMES AND BUSINESSES BUILT BY MARSHALL DECENDANTS



53 17<sup>TH</sup> Street, built by Neuman in 1938 (Marshall Builders Supply is Stamped Under the House)



Hinkley House, 219 Hwy 98, built by Dwight Marshall



## HOMES AND BUSINESSES BUILT BY GEORGE MARSHALL



Benedict Hall, Trinity Episcopal Church, 79 6<sup>th</sup> Street, built by George in 1932



117 Market Street, built by George, cast concrete mold



Cook Building, 71 and 73 Market Street, built by George 1909-1913



# HOMES AND BUSINESSES BUILT BY JOHN AND GEORGE MARSHALL



Avenue E and Market Street



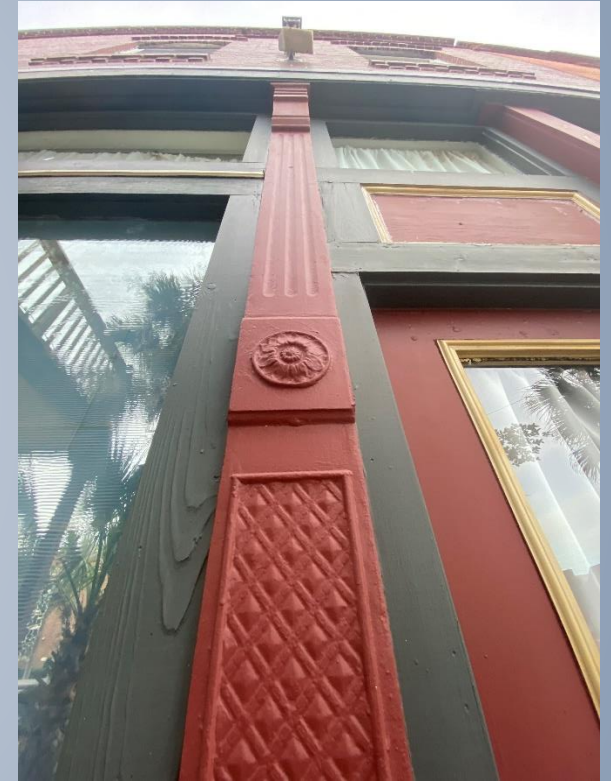


Dixie Theater, 21 Ave E, Built by George and John Marshall in 1912





# HOMES AND BUSINESSES BUILT BY JOHN AND GEORGE MARSHALL



Architectural Features of Dixie Theater



# CHAPMAN SCHOOL AUDITORIUM

“Finest Example of Art Deco in Franklin County”  
Cast Stone Architecture  
Built by George in 1932





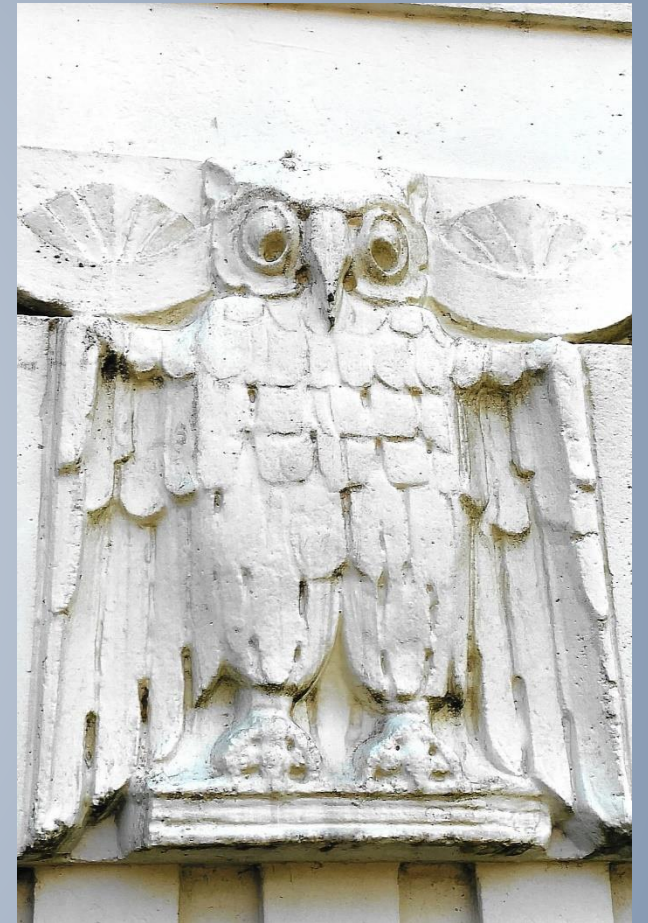
# CHAPMAN AUDITORIUM



Exterior Owl



Exterior Border with Crabs



Exterior Owl and Scallops



## CHAPMAN SCHOOL/AUDITORIUM



Arched Ceiling at Doorway



Interior Doorway Leading to  
Classrooms



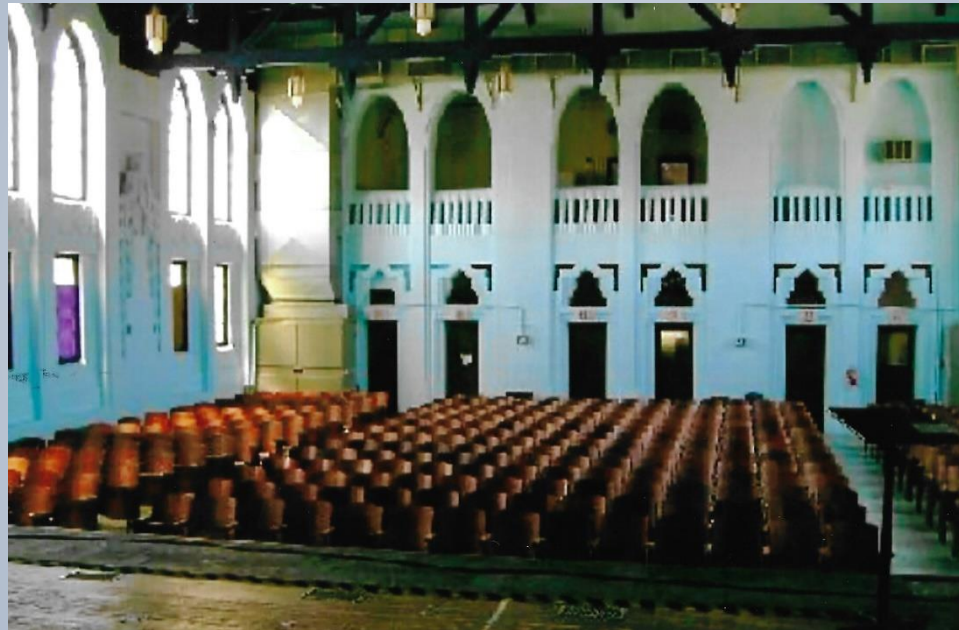
Interior Stairway Border



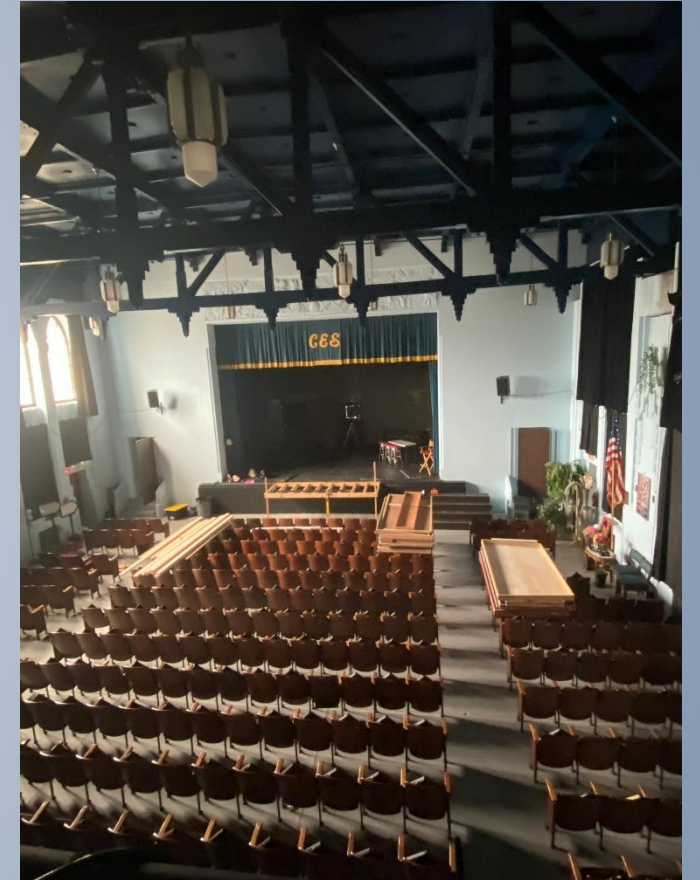
# CHAPMAN SCHOOL/AUDITORIUM



Interior Doorway Leading to  
Auditorium



Interior Auditorium View from Stage



Interior Doorway Looking at Stage



## GEORGE H MARSHALL'S CONCRETE BUSINESS



Business Signs



Mount Zion Baptist Church - Built 1917,  
Cast Concrete Block with a Rusticated  
Finish



## WILLIAM LENHOLF MARSHALL (Married Grace Fenton Spiller)

- Children: Lenholf, Addison, Eliza and William
- Builder and Civic Leader (High Priest Mason, Kiwanis Club for 25 years, Tallahassee Mayor from 1932-1933, Tallahassee City Commissioner and Vestry Member of St Johns Episcopal Church for 26 years and Junior Warden for 15 years)
- Birth 28 Apr 1873 \* Baltimore MD
- Death 26 Mar 1957 \* Tallahassee FL



William Lenholf  
Marshall



William Lenholf Marshall  
House, Apalachicola



Grace Fenton Spiller



## THERE'S NO PLACE LIKE HOME



The Frank Spiller house, left, was built in 1870 at 560 East Call Street in Tallahassee prior to burning in 1904. The house on the right, at 34 16th Street in Apalachicola, was constructed in 1901 by William Lenholf to resemble his wife Grace Spiller's childhood home.



## FURNITURE MADE BY WILL MARSHALL (Christmas Gifts to Eliza Marshall)



Doll Bed – Eliza  
Marshall's Dolls



Wash Basin Cupboard



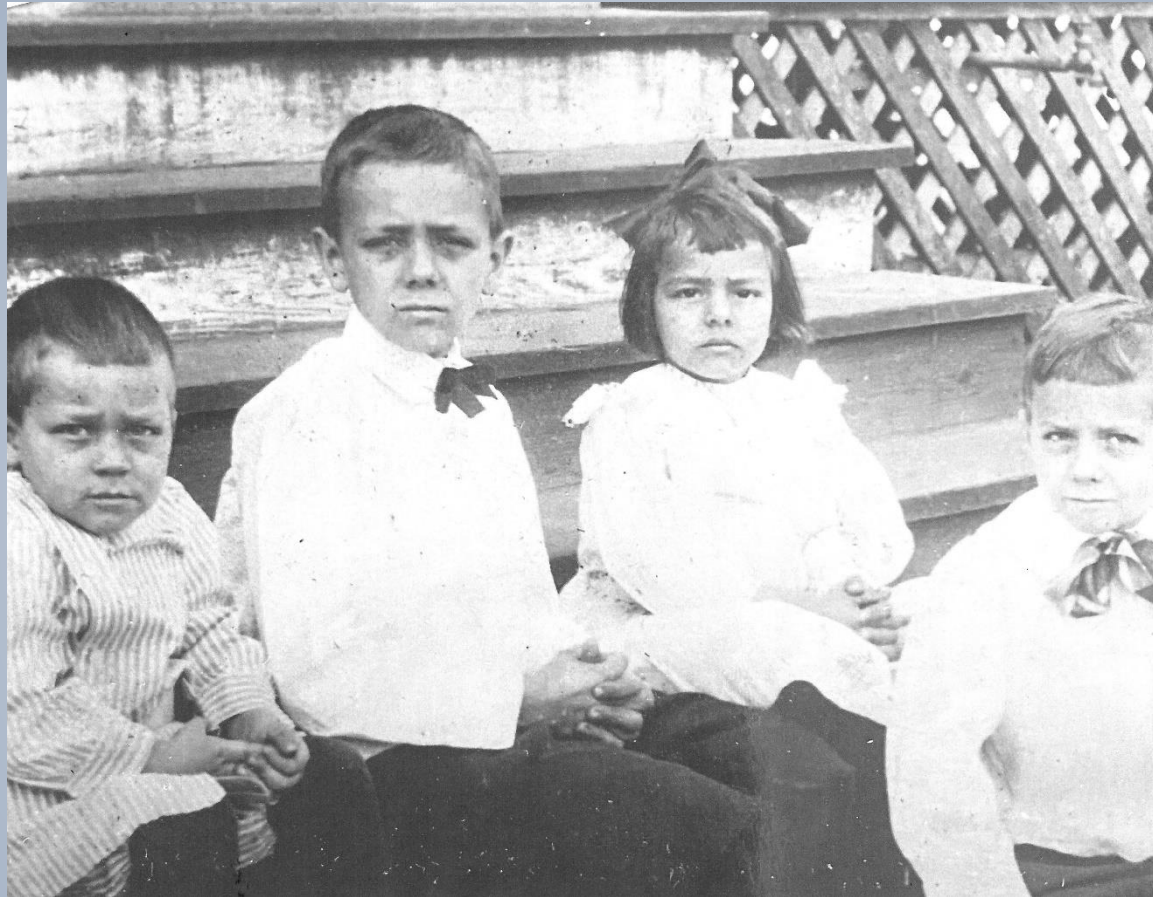
Dresser



Chair for Toddler Eliza



## WILL AND GRACE'S CHILDREN



Left to Right: Bill, Lenholf, Eliza and Addison Marshall



## WILL AND GRACE'S FAMILY



Left to Right, Top to Bottom: Grace Register, Mary Jane Marshall, Bill Marshall, Eloise Marshall, Alonzo Register, Lenholf (Uncle Skinny) Marshall, Frank Marshall, Virginia Marshall, Mary Lee Register, Nancy Marshall, Addison Franklin Marshall (with Bryant Marshall on his lap), Step-Grandmother Bessie Marshall, William Lenholf Marshall, Marshall Register, Melinda Marshall, Emily Marshall, Mary Marshall, Al Marshall, Billy Marshall and Dallas Marshall.



## LIFE ON THE WATER IN APALACHICOLA



The Miss Grace, a boat built by Will and John Marshall, was named after Will's wife Grace. Shown in the photo on the right are John, sitting, and Will, standing.



## THE FERRY FROM EASTPOINT TO APALACHICOLA

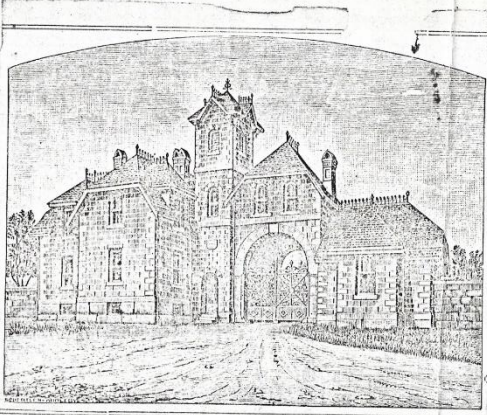


On this trip to Apalachicola, teenager Eliza Marshall is shown in the upper middle right wearing a white blouse with a wide collar. In front of her is sitting Roy Collins, future Governor of Florida.



# IDA MARSHALL

- Birth and Death 1875
- Buried in Mount Olivet Cemetery (resting place of the Methodist/Episcopal Bishops), Baltimore MD with her Father

	<p><b>MOUNT OLIVET CEMETERY</b> OFFICE, COR. CHARLES &amp; FAYETTE STS. Open Daily from 9 A. M., to 2 P. M.</p> <p><i>Mr. John Marshall</i> To MOUNT OLIVET CEMETERY, DR.</p> <table><tr><td>For <i>Himself</i></td><td>Decased.</td></tr><tr><td>Lot No. <i>Sp 6</i></td><td>Area <i>2</i></td></tr><tr><td>For <i>Main</i> Grave and Sodding</td><td><i>5.50.</i></td></tr><tr><td>Depositing in Mausoleum and use</td><td>Month</td></tr><tr><td>Removal from Mausoleum or Cemetery,</td><td></td></tr><tr><td>Disinterring</td><td></td></tr></table> <p><i>Febury 6 1885. Received Payment,</i> <i>W. B. Bridgman, Agent.</i> <i>5.50</i></p> <p><small>CURRY, CLAY &amp; CO., PRS.</small></p>	For <i>Himself</i>	Decased.	Lot No. <i>Sp 6</i>	Area <i>2</i>	For <i>Main</i> Grave and Sodding	<i>5.50.</i>	Depositing in Mausoleum and use	Month	Removal from Mausoleum or Cemetery,		Disinterring	
For <i>Himself</i>	Decased.												
Lot No. <i>Sp 6</i>	Area <i>2</i>												
For <i>Main</i> Grave and Sodding	<i>5.50.</i>												
Depositing in Mausoleum and use	Month												
Removal from Mausoleum or Cemetery,													
Disinterring													

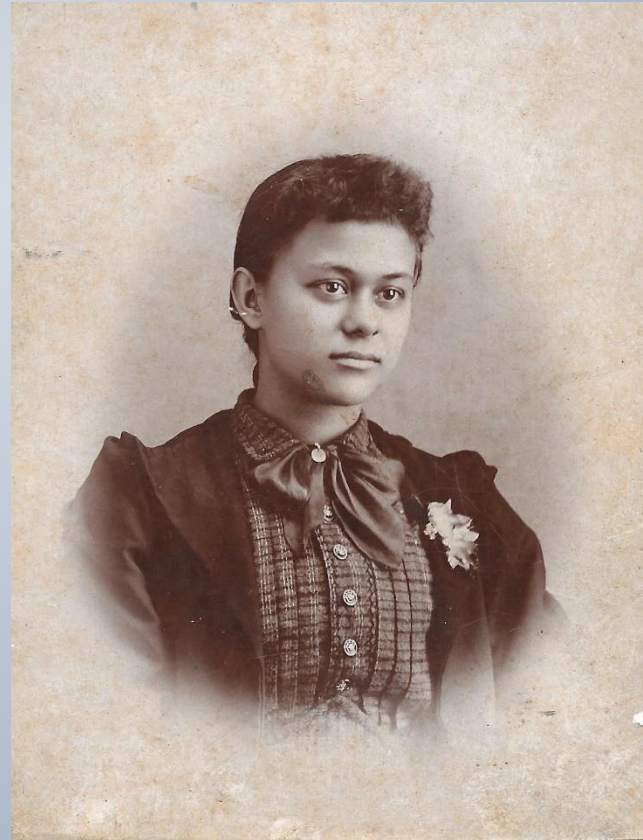
  

No. <i>25</i>	Baltimore, <i>May 18<sup>th</sup> 1885</i>
<b>Mount Olivet Cemetery.</b>	
I hereby request my lot, <i>Sp</i> No. <i>6</i> Area, <i>2</i> to be kept in order for the year, <i>1885</i> for which, I <del>promise to</del> pay to the agent of said cemetery, the sum of <i>2</i> dolls, <i>50</i> Cts.	
<i>Mrs Minnie Marshall</i>	



## EMMA F MARSHALL

- Birth 1876 \* Baltimore MD
- Died in Childbirth
- Married R. H. Coxe, 9 January 1895
- Had a daughter, Kathleen





## RICHARD T MARSHALL (Married Nellie Irene, then Lillian Elizabeth)

- Birth 1880 \* Baltimore MD
- Death 17 Oct 1955
- Children: Louise, Herman and Betty